



NORDUTENSILI

DRILLS HAND SHARPENING MACHINE
便携式磨刀机



Machine set for re-sharpening of:

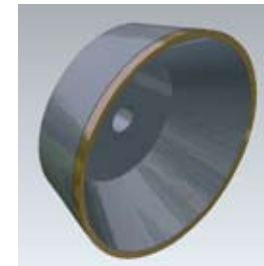
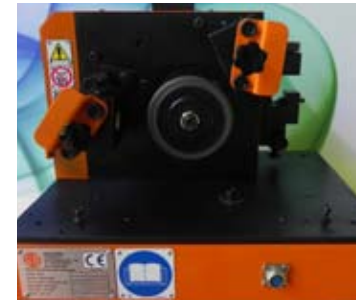
- dowel drills Art. 015, 016, 021
- drills with radius spurs: Art. LASER
- through bore drills Art. 024, 025

- Benefits: compact machine useful for every craft workshop and industry. The sharp bits are always available, saving time and cutting costs. The same machine can be set with 3 different wheels and is fitted with supports and guides for creating cutting angles by means of simple hand adjustments. With the same wheel it is possible to resharpen about 2000 drills, then you need to make the wheel profile again with the wheel dresser.

- Application: machine for re-sharpening drills using a grinding wheel with preset angles.

DRILLS HAND SHARPENING MACHINE

便携式磨刀机



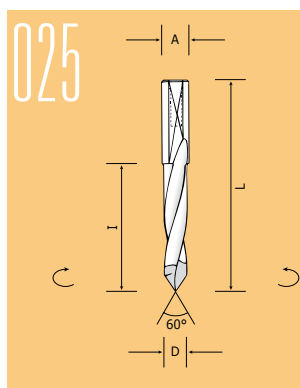
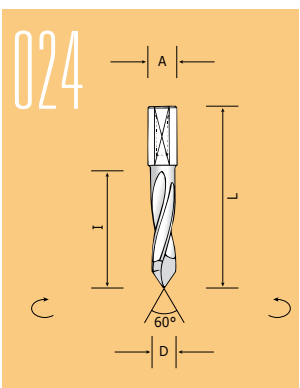
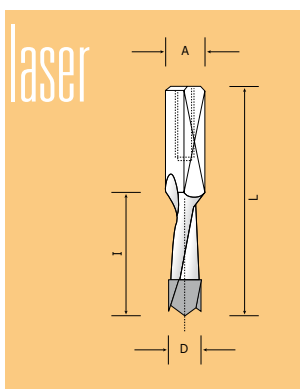
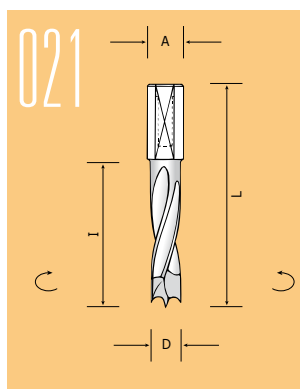
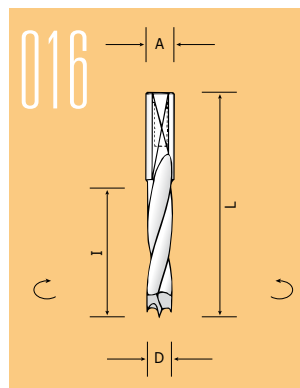
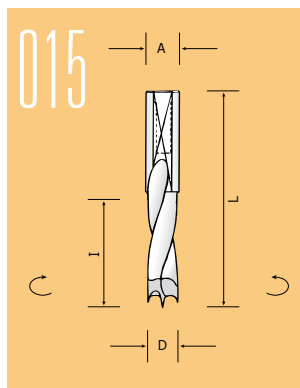
便携式磨刀机

上述磨刀机式样可打磨下列钻头：Art. 015, 016, 021 Art. LASER

上述磨刀机式样可打磨下列钻头：通孔钻Art. 024, 025

优点：该小型磨刀机可用于各种工业领域，并适用打磨多种钻头，省时省钱。通过运用辅助单元调整，该磨刀机可以安装三种不同式样的砂轮，用于打磨通孔钻和LASER系列钻头。

用途：用带角度的砂轮打磨已使用变钝的钻头。



Technical data: 技术参数			
General data 主要参数		U. of M.	Value 数值
Width 宽		[mm]	415
Depth 长		[mm]	310
Height 高		[mm]	335
Total empty weight 净重		[kg]	25
Spindle rotation speed 主轴转速		[rpm]	3200
Spindle wattage 主轴功率		[W]	90
Maximum diameter of machined drills: 钻头最大直径：请参考以下系列			
• dowel drills Art. 015, 016, 021		[mm]	10
• drills with radius spurs: Art. LASER			8
• through bore drills Art. 024, 025			10
Diameter of the twin-cutter grinding wheel 砂轮直径		[mm]	100
Diameter of the flared-cup grinding wheel 角度砂轮盘直径		[mm]	100
Power Supply 输入参数		U. of M.	Value
Mains voltage 电压		[V]	85-264 AC
Frequency 频率		[Hz]	47-63
Phases 相数			2P+G
Power circuit voltage 电源电路电压		[V]	24 DC
Control circuit voltage 控制电路电压		[V]	24 DC.
Installed power (motor + dresser) 安装功率 马达+砂轮修整器		[W]	90 + 50
Maximum amperage (motor + dresser) 最大电流 马达+砂轮修整器		[A]	5 + 3